

Phospho-MUC1(T1224) Antibody
Affinity Purified Rabbit Polyclonal Antibody (Pab)
Catalog # AP3728a**Specification**

Phospho-MUC1(T1224) Antibody - Product Information

Application	IF, DB,E
Primary Accession	P15941
Reactivity	Human
Host	Rabbit
Clonality	Polyclonal
Isotype	Rabbit IgG
Calculated MW	122102

Phospho-MUC1(T1224) Antibody - Additional Information**Gene ID** 4582**Other Names**

Mucin-1, MUC-1, Breast carcinoma-associated antigen DF3, Cancer antigen 15-3, CA 15-3, Carcinoma-associated mucin, Episialin, H23AG, Krebs von den Lungen-6, KL-6, PEMT, Peanut-reactive urinary mucin, PUM, Polymorphic epithelial mucin, PEM, Tumor-associated epithelial membrane antigen, EMA, Tumor-associated mucin, CD227, Mucin-1 subunit alpha, MUC1-NT, MUC1-alpha, Mucin-1 subunit beta, MUC1-beta, MUC1-CT, MUC1, PUM

Target/Specificity

This MUC1 Antibody is generated from rabbits immunized with a KLH conjugated synthetic phosphopeptide corresponding to amino acid residues surrounding T1224 of human MUC1.

Dilution

IF~~1:10~50

DB~~1:500

E~~Use at an assay dependent concentration.

Format

Purified polyclonal antibody supplied in PBS with 0.09% (W/V) sodium azide. This antibody is purified through a protein A column, followed by peptide affinity purification.

Storage

Maintain refrigerated at 2-8°C for up to 2 weeks. For long term storage store at -20°C in small aliquots to prevent freeze-thaw cycles.

Precautions

Phospho-MUC1(T1224) Antibody is for research use only and not for use in diagnostic or therapeutic procedures.

Phospho-MUC1(T1224) Antibody - Protein Information

Name MUC1

Synonyms PUM

Function The alpha subunit has cell adhesive properties. Can act both as an adhesion and an anti-adhesion protein. May provide a protective layer on epithelial cells against bacterial and enzyme attack.

Cellular Location

Apical cell membrane; Single-pass type I membrane protein. Note=Exclusively located in the apical domain of the plasma membrane of highly polarized epithelial cells After endocytosis, internalized and recycled to the cell membrane Located to microvilli and to the tips of long filopodial protusions [Isoform Y]: Secreted. [Mucin-1 subunit beta]: Cell membrane. Cytoplasm. Nucleus. Note=On EGF and PDGFRB stimulation, transported to the nucleus through interaction with CTNNB1, a process which is stimulated by phosphorylation. On HRG stimulation, colocalizes with JUP/gamma-catenin at the nucleus

Tissue Location

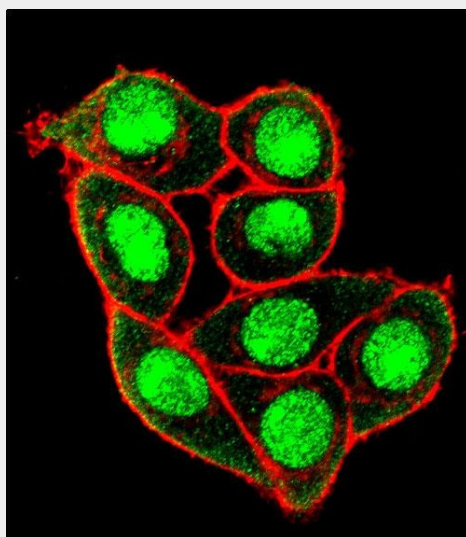
Expressed on the apical surface of epithelial cells, especially of airway passages, breast and uterus. Also expressed in activated and unactivated T-cells. Overexpressed in epithelial tumors, such as breast or ovarian cancer and also in non-epithelial tumor cells. Isoform Y is expressed in tumor cells only

Phospho-MUC1(T1224) Antibody - Protocols

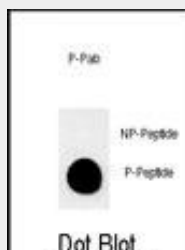
Provided below are standard protocols that you may find useful for product applications.

- [Western Blot](#)
- [Blocking Peptides](#)
- [Dot Blot](#)
- [Immunohistochemistry](#)
- [Immunofluorescence](#)
- [Immunoprecipitation](#)
- [Flow Cytometry](#)
- [Cell Culture](#)

Phospho-MUC1(T1224) Antibody - Images



Confocal immunofluorescent analysis of Phospho-MUC1-T1224 Antibody(Cat#AP3728a) with Hela cell followed by Alexa Fluor 488-conjugated goat anti-rabbit IgG (green). Actin filaments have been labeled with Alexa Fluor 555 phalloidin (red).



Dot blot analysis of anti-Phospho-MUC1-pT1224 Phospho-specific Pab (Cat. #AP3728a) on nitrocellulose membrane. 50ng of Phospho-peptide or Non Phospho-peptide per dot were adsorbed. Antibody working concentrations are 0.5ug per ml.

Phospho-MUC1(T1224) Antibody - Background

MUC1 is a member of the mucin family and encodes a membrane bound, glycosylated phosphoprotein. The protein is anchored to the apical surface of many epithelia by a transmembrane domain, with the degree of glycosylation varying with cell type. It also includes a 20 aa variable number tandem repeat (VNTR) domain, with the number of repeats varying from 20 to 120 in different individuals. The protein serves a protective function by binding to pathogens and also functions in a cell signaling capacity. Overexpression, aberrant intracellular localization, and changes in glycosylation of this protein have been associated with carcinomas.

Phospho-MUC1(T1224) Antibody - References

Li, Y., et al. Am. J. Physiol. Lung Cell Mol. Physiol. 298 (4), L558-L563 (2010)
Sachdeva, M., et al. Cancer Res. 70(1):378-387(2010)
Ricci, A., et al. Sarcoidosis Vasc Diffuse Lung Dis 26(1):54-63(2009)

Phospho-MUC1(T1224) Antibody - Citations

- [Pirfenidone anti-fibrotic effects are partially mediated by the inhibition of MUC1 bioactivation](#)